



SELECT DESIRED SIZE:

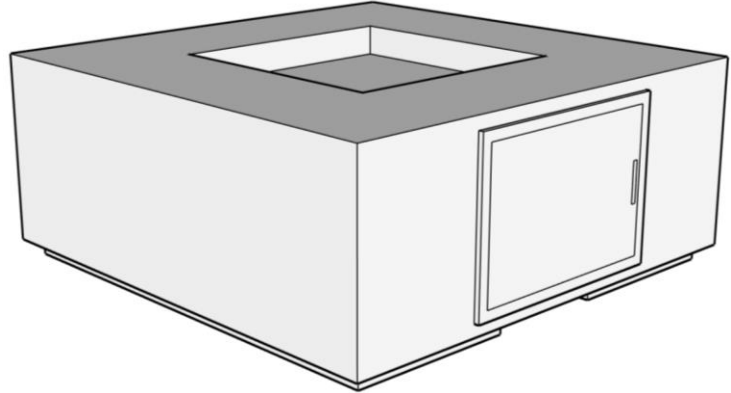
- ☐ 36" X 36" X 20"H
☐ 42" X 42" X 20"H
☐ 48" X 48" X 20"H (SHOWN)

SELECT DESIRED FINISH:

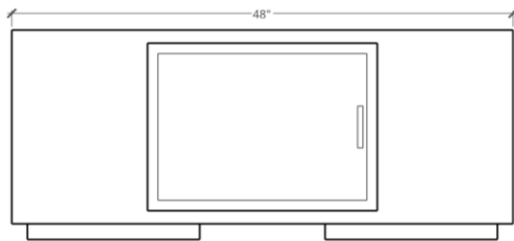
- ☐ WHITE ☐ MESA
☐ GREY ☐ NATURAL
☐ MALIBU ☐ IRON
☐ IDAHO ☐ STEEL

SELECT DESIRED ACCESSORIES:

- ☐ WIND GUARD ☐ FIRE GLASS
☐ FIREBALLS ☐ COVER



PERSPECTIVE



SIDE ELEVATION



FRONT ELEVATION

| DIMENSIONS | BURNER AREA | WEIGHT | BURNER | BTU RATING |
|------------------|-------------|---------|------------------|------------|
| 36" X 36" X 20"H | 12" X 12" | 300 LBS | 6" ROUND BURNER | 60K |
| 42" X 42" X 20"H | 24" X 24" | 375 LBS | 12" ROUND BURNER | 90K |
| 48" X 48" X 20"H | 30" X 30" | 425 LBS | 18" ROUND BURNER | 150K |

SPECIFICATIONS:

FIREPIT INCLUDES: BURNER, HOSES, KEY VALVE, AIR MIXER, PROPANE TANK, ACCESS DOOR, AND BLACK CRUSHED LAVA

ALL FIREPITS INCLUDE: 1 1/2" X 1 1/2" TOE KICK WITH TWO 12" X 1 1/2" VENTILATION OPENINGS

MANUFACTURER NOTES:

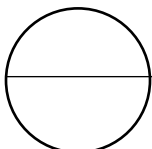
1. CONTACT MANUFACTURER FOR FURTHER COLOR AND FINISH OPTIONS FOR ACCESSORIES

NOTES:

1. INSTALLATION TO BE COMPLETED IN ACCORDANCE WITH MANUFACTURER'S SPECIFICATIONS

2. DO NOT SCALE DRAWING

3. THIS DRAWING IS INTENDED FOR USE BY ARCHITECTS, ENGINEERS, CONTRACTORS, CONSULTANTS AND DESIGN PROFESSIONALS FOR PLANNING PURPOSES ONLY. THIS DRAWING MAY NOT BE USED FOR CONSTRUCTION



FIREPITS

BLOCK QUADRA – PROPANE TANK, MATCH LIT