



SELECT DESIRED SIZE:

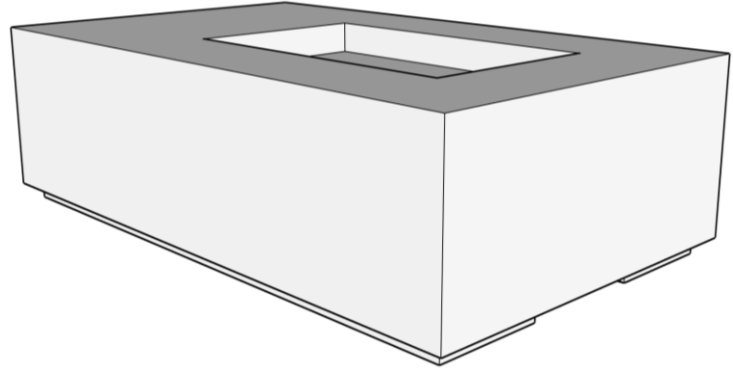
- ☐ 60" X 36" X 18"H (SHOWN)
- ☐ 72" X 42" X 18"H
- ☐ 84" X 42" X 18"H

SELECT DESIRED FINISH:

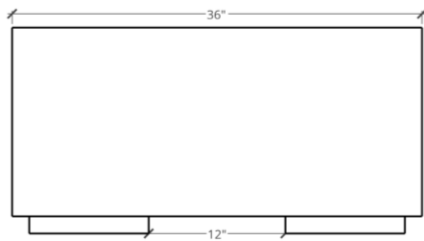
- ☐ WHITE
- ☐ GREY
- ☐ MALIBU
- ☐ IDAHO
- ☐ MESA
- ☐ NATURAL
- ☐ IRON
- ☐ STEEL

SELECT DESIRED ACCESSORIES:

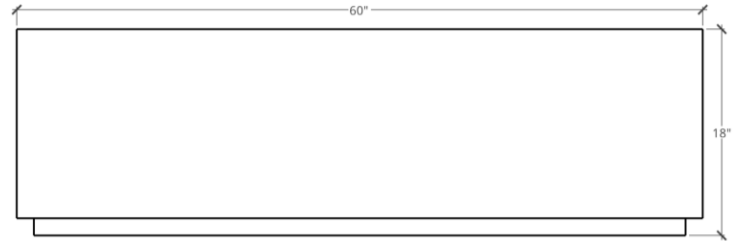
- ☐ WIND GUARD
- ☐ FIRE GLASS
- ☐ FIREBALLS
- ☐ COVER



PERSPECTIVE



SIDE ELEVATION



FRONT ELEVATION

DIMENSIONS	BURNER AREA	WEIGHT	BURNER	BTU RATING
60" X 36" X 18"H	30" X 18"	400 LBS	18" H-BURNER	60K
72" X 42" X 18"H	36" X 18"	500 LBS	24" H-BURNER	90K
84" X 42" X 18"H	42" X 18"	575 LBS	30" H-BURNER	90K

SPECIFICATIONS:

FIREPIT INCLUDES: BLACK CRUSHED LAVA

ALL FIREPITS INCLUDE: TWO 12" X 1 1/2" VENTILATION OPENINGS

MANUFACTURER NOTES:

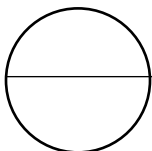
1. CONTACT MANUFACTURER FOR FURTHER COLOR AND FINISH OPTIONS FOR ACCESSORIES

NOTES:

1. INSTALLATION TO BE COMPLETED IN ACCORDANCE WITH MANUFACTURER'S SPECIFICATIONS

2. DO NOT SCALE DRAWING

3. THIS DRAWING IS INTENDED FOR USE BY ARCHITECTS, ENGINEERS, CONTRACTORS, CONSULTANTS AND DESIGN PROFESSIONALS FOR PLANNING PURPOSES ONLY. THIS DRAWING MAY NOT BE USED FOR CONSTRUCTION



FIREPITS

ASYMMETRIC FIREPIT – NATURAL GAS, MATCH LIT